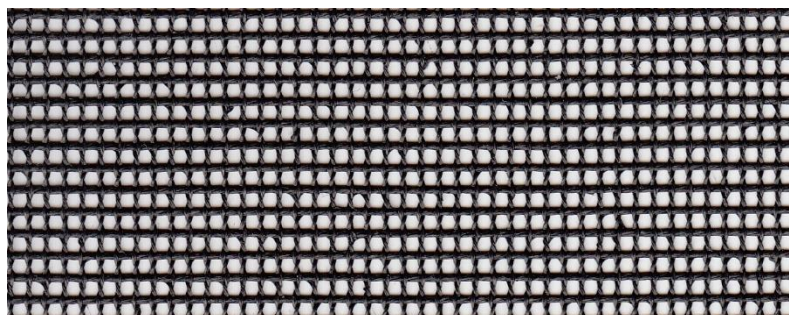


9004 AS



Product	Product category	Coating
PTFE GLASS FABRIC	OPEN MESH SERIE	PTFE

Properties	Metric		Imperial	
Standard width(s) <i>Please ask for other widths</i>	2050, 2650, 3200	mm	81, 104.5, 126	inches
Thickness	0,80	mm	0.0314	inches
Weight	460	gr/m ²	13.57	oz/sq yd
Mesh size	2 x 2	mm	0.078 x 0.078	inches
PTFE content	27	%	27	%
Open area	60	%	60	%
Surface resistivity	1x10 ⁶ max	ohms/sq	1x10 ⁶ max	ohms/sq
Tensile strength	1500	N/5 cm	171	lbs/inches
Elongation	< 1	% at 7 kg/cm	< 1	% at 40 lbs/in
Temperature resistance	-150 to 260	°C	-238 to 500	°F

Excellent properties of Fiberflon Open Mesh Belts:

Outstanding temperature resistance, Resistant to corrosive agents, Low thermal mass, Controlled porosity, Superior non-stick surface, easy to clean, High dielectric strength, Dimensional stability, Non-toxic, Superior tracking. The product does not contain banned substances as described in RoHS directive and will not affect RoHS compliance.



Note: Nominal thickness, weight and tensile strength values are typical and are not intended as a specification minimum. Weight Tolerance g/m² = ±%5
 All technical data are based on average values. These values are not intended for use in preparing specifications. Technical information contained herein are based on test results FIBERFLON believes to be reliable, but they are not to be construed in any manner as warranties expressed.
 All data is subject to change without notice.